

AUGER DRIVES SKID STEER LOADER



www.clfab.com
712-542-5500
CLFAB

4DSS

Standard flow, Max torque 3,821 FT-LBS

\$3850

4DDS

High flow, Max torque 4,180 FT-LBS

\$4560

PACKAGE PRICE INCLUDES HOSES,
FF QUICK DISCONNECTS, UNIVERSAL SKID
STEER SIDE SHIFT MOUNT & LINKAGE

- Compact high torque planetary gearbox with Eaton motor
- 2 Piece shaft design ensures maximum side load ratings without increasing load on bearings
- 5-year gear box and 3-year motor warranty / lifetime shaft pull-out warranty

CL Fabrication Inc.
420 S 8th St, PO Box 200
Clarinda Iowa 51632
712-542-5500



Side shift mount is standard



09-29-23

AUGER DRIVES SKID STEER LOADER



www.clfab.com
712-542-5500
CLFAB

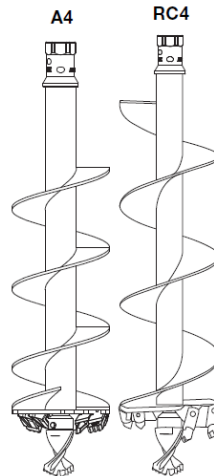
AUGER BITS

TREE PLANTER

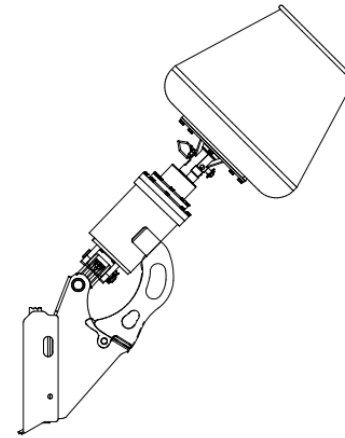
OVERALL DIAMETER	INNER DIAMETER	CODE	MSRP
12" OUTER FLIGHTS	6" TAP ROOT	TP12-06-3-E	\$990
16" OUTER FLIGHTS	8" TAP ROOT	TP16-08-3-E	\$1,180
20" OUTER FLIGHTS	10" TAP ROOT	TP20-10-3-E	\$1,430
24" OUTER FLIGHTS	12" TAP ROOT	TP24-12-3-E	\$1,620
28" OUTER FLIGHTS	14" TAP ROOT	TP28-14-3-E	\$1,820
32" OUTER FLIGHTS	16" TAP ROOT	TP32-16-3-E	\$2,020
36" OUTER FLIGHTS	18" TAP ROOT	TP36-18-3-E	\$2,710
48" OUTER FLIGHTS	24" TAP ROOT	TP48-24-3-MFT	\$3,920



A4 - GENERAL PURPOSE			RC4 - ROCK / EARTH COMBO			
4FT OAL	LIGHT CONDITIONS EARTH		HEAVY CONDITIONS MFT - HARD GROUND		FRACTURABLE ROCK / EARTH CLAY / SHALE	
DIA	CODE	MSRP	MSRP	MSRP	CODE	MSRP
6"	A4-06-3-E	\$450	A4-06-3-MFT	\$480	RC4-06-3-MFT	\$790
8"	A4-08-3-E	\$490	A4-08-3-MFT	\$605	RC4-08-3-MFT	\$800
9"	A4-09-3-E	\$500	A4-09-3-MFT	\$630	RC4-09-3-MFT	\$820
10"	A4-10-3-E	\$570	A4-10-3-MFT	\$655	RC4-10-3-MFT	\$910
12"	A4-12-3-E	\$580	A4-12-3-MFT	\$680	RC4-12-3-MFT	\$960
14"	A4-14-3-E	\$690	A4-14-3-MFT	\$755	RC4-14-3-MFT	\$1,080
16"	A4-16-3-E	\$825	A4-16-3-MFT	\$920	RC4-16-3-MFT	\$1,230
18"	A4-18-3-E	\$890	A4-18-3-MFT	\$1,005	RC4-18-3-MFT	\$1,270
20"	A4-20-3-E	\$975	A4-20-3-MFT	\$1,130	RC4-20-3-MFT	\$1,390
24"	A4-24-3-E	\$1,130	A4-24-3-MFT	\$1,280	RC4-24-3-MFT	\$1,650
30"	A4-30-3-E	\$1,390	A4-30-3-MFT	\$1,520	RC4-30-3-MFT	\$2,490
36"	A4-36-3-E	\$1,660	A4-36-3-MFT	\$1,820	RC4-36-3-MFT	\$2,920



INCLUDES PIN, CLIP, TEETH & PILOT



Turn your auger drive into a cement mixer

Capacity
5.7 cubic feet, 42 gallons
Fits 2" hex drive
Includes cradle adapter
Fits CL Fab drives

\$850



**EXTENTIONS
INCLUDE A PIN & CLIP**

AUGER EXTENSIONS

X020 TO SUIT A4 & RC4 BITS

DESCRIPTION	CODE	MSRP
2 FOOT OUTER EXTENSION - 2" HEX	X020IH-2F	\$370
3 FOOT OUTER EXTENSION - 2" HEX	X020IH-3F	\$385
4 FOOT OUTER EXTENSION - 2" HEX	X020IH-4F	\$410
6 FOOT OUTER EXTENSION - 2" HEX	X020IH-6F	\$455
8 FOOT OUTER EXTENSION - 2" HEX	X020IH-8F	\$480